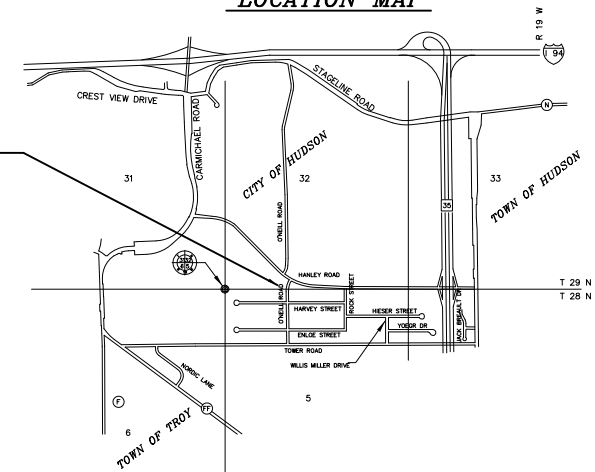


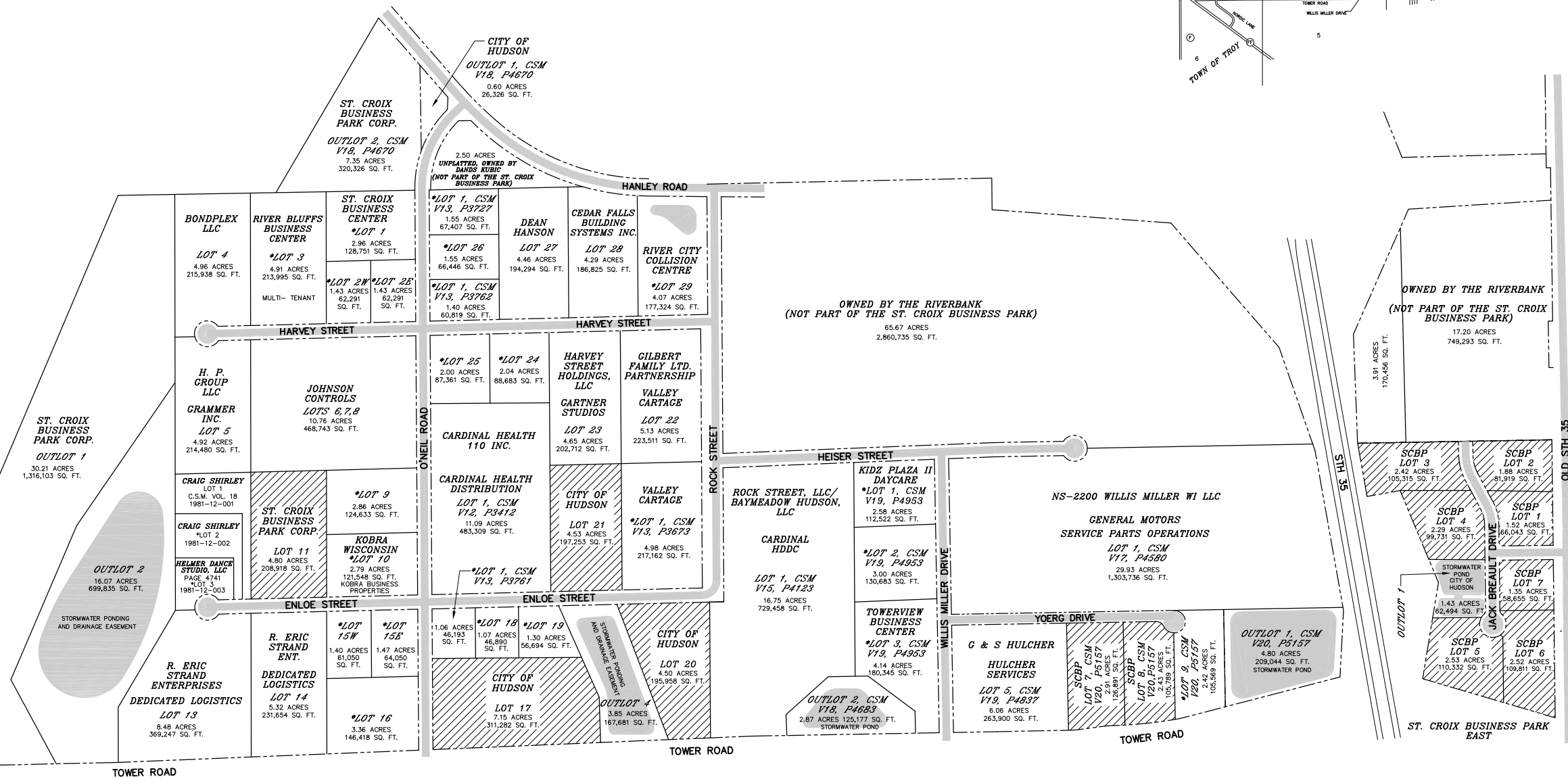
# ST. CROIX BUSINESS PARK

LOT NUMBER	OWNER	BUSINESS
LOT 1	ST. CROIX BUSINESS CENTER (MULTIPLE OWNERS)	SHAW-LUNDQUIST ASSOC. INC., KEY TITLE, BUILDERS MILLWORK, PICTURE FACTORY, FABULOUS FINDS, GIGGLE FACTORY, WISCONSIN HARDWOOD FLOORING, ABRASIVE WAREHOUSE INC., DRAGONFLY SPIRIT STUDIO, AUTHENTIC ANCIENT ARTS, SOS FOR YOUTH
LOT 2E	J & S ROBERTS	HARVEST TEC
LOT 2W	TW EQUITIES LLC	AMERICAN INSTITUTIONAL SUPPLIES, TURKEY CORRECTIONS
LOT 3	RIVER BLUFF BUSINESS CENTER LLC	VALLEY MANAGEMENT GROUP, RJA DISPERSIONS, TWIN RIVERS LLC
LOT 9	KELLER ST. CROIX PROP. LLC & W2M PROPERTIES	KELLER COMPANIES LLC, STEVENS ENGINEERS INC
LOT 10	KOBRA WISCONSIN PROPERTIES LLC	KOBRA MOLDS LLC
LOT 2, CSM, V18 P4741	CRAIG SHIRLEY	WESTERN WISCONSIN AUTISM ADVOCACY & CONSULTING SERVICES INC (RESOURCE ROOM), HEALING WATERS QIGONG CENTER
LOT 3, CSM, V18 P4741	HELMER DANCE STUDIO LLC	HELMER DANCE STUDIO
LOT 15E	J.C. PROPERTIES OF WISCONSIN LLC	INDIE SALES AND SERVICE
LOT 15W	HUDSON SCHOOL OF GYMNASTICS LLC	HUDSON SCHOOL OF GYMNASTICS
LOT 16	MILLER AND HOLMES INC	MILLER AND HOLMES INC
LOT 18	CROIX COMMERCIAL, LLC RANDI LEE ERICKSON GRUPE & GRUPE C/O OF MIDAMERICAN FINANCIAL	CROIX CUSTOM HOMES INC, CROIX COUNSELING & PSYCHOLOGY, EVANSON PLUMBING, MIDAMERICA FINANCIAL, ALADTEC
LOT 19	A&H PROP. OF W LLC, M DOUGLAS & C JOHNSON, HILL & FEGGESTAD PROP. LLC AND CLINT KUMMER	S&N SURVEYING, AUTH CONSULTING, J RYAN BONDING, INC., ALLSTATE, COMFORT KEEPERS, IS IT 2B MARKETING, HUDSON SPINE & WELLNESS INSTITUTE
LOT 24& 25	BADGER HOUSING ASSOC. VI LLC	STATE OF WISCONSIN: DRIVER LICENSING, COMMUNITY CORRECTIONS/PROBATION/ PAROLE, PUBLIC DEFENDER
LOT 26	RESOURCE PROPERTIES LLC	PROGRESSIVE, RESOURCE PROPERTIES, PAWS & CLAWS, VECTOR & PROCENTIVE
LOT 27	DEAN HANSON	GAMRA COMPOSITES, ST. CROIX TRADING & COLLECTIBLES
LOT 29	BLK LLC	HEPPNER'S RIVER CITY COLLISION CTR, RIVER CITY AUTOMOBILES, & INDIAN HEAD GLASSES
LOT 1, CSM V13, P3673	GILBERT FAMILY LTD PARTNERSHIP	VALLEY CARTAGE
LOT 1, CSM V13, P3727	CITIES DIGITAL INC	CITIES DIGITAL, MIRACLES SOFTWARE, ST. CROIX BODYZONE & TAN, MIKE'S CUSTOM UPHOLSTERY
LOT 1, CSM V13, P3762	DIVERSIFIED INVESTMENTS OF HUDSON INC	AIRWORTHY AEROSPACE INDUSTRIES
LOT 1, CSM V13, P3761	CRESTWOOD LLP	APPLIED SALES INC
LOT 9, CSM V20, P5157	SHOFLD INVESTMENTS LLC	ST. CROIX VALLEY ECOWATER SYSTEMS
LOT 1, CSM V19, P4953	KIDZPLAZA II LLC	KIDZPLAZA II DAY CARE KALADI'S 2.0
LOT 2, CSM V19, P4953	PRECO INC	PRECO INC MEDICAL & PRECISION CONVERTING
LOT 3, CSM V19, P4953	TOWERVIEW BUSINESS CTR LOROUN LLC	J & L STEEL, ERECTORS AND ELECTRICAL SERVICES, ASCENT COMPANIES, ENERGY CONCEPTS, DIVINE CUSTOM HOMES, AG PARTS WORLDWIDE, PIONEER PRESS, LHI TECHNOLOGIES

LOCATION MAP



ST. CROIX BUSINESS PARK



LEGEND

- INDICATES LOTS WITH INFO IN ABOVE TABLE
- ▨ AVAILABLE LOT

